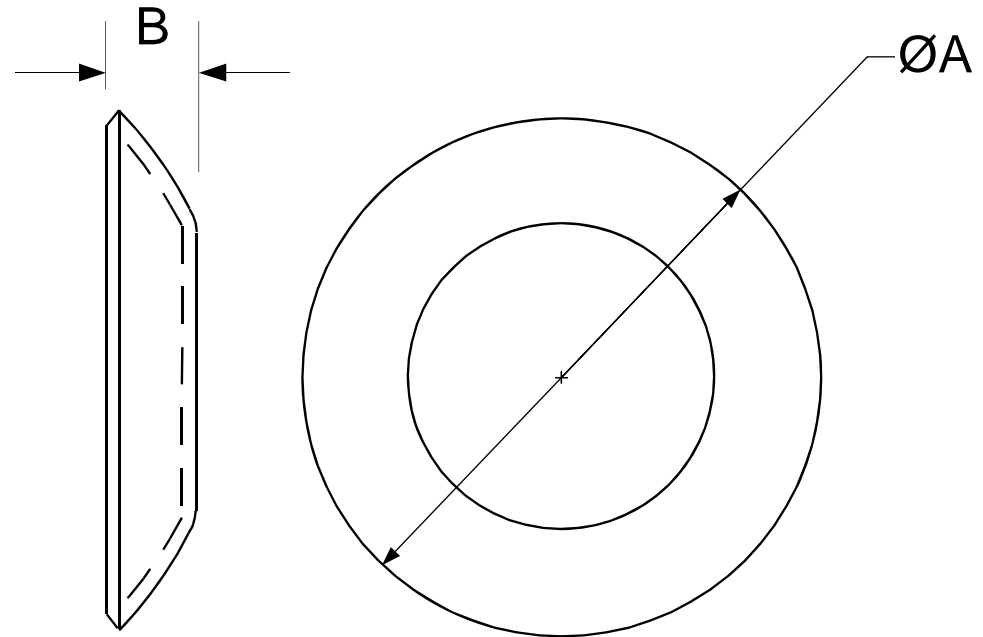




Product Data Sheet

POLE CAPS - Weld on

Application : Capping of Lighting Columns, Sign Posts, Bracket Arms, CCTV and Transmission Poles



Material - Low carbon Steel to EN 10130 FePo4 - 3mm Thick

Finish - Self Colour

All dimensions in Millimetres

Regent Part No	Description	Dimn A	Dimn B	To fit TubeØ
0021.R	74MM Ø WELD ON CAP	74	9	76.1
0022.R	86MM Ø WELD ON CAP	86	16	88.9
0023.R	110MM Ø WELD ON CAP	110	22	114.3
0150.R	137MM Ø WELD ON CAP	137	25	139.7

The Regent Engineering Co. (Walsall) Ltd Salisbury Street Darlaston Wednesbury West Midlands WS10 8XB UK

E-mail : info@regenteng.com

Web : www.regenteng.com

Phone 44 (0)121 526 6060

Fax : 44(0)121 526 4789

© 2005